



General data of the country

a. Data

Country	Uganda
Population	41,487,965 ¹
IHDI	0.341 ²
Maternal Mortality ratio per 100,000 births	343 ³
Gender-related Development Index	0.878 ⁴
Population within UNHCR mandate	1,444,973 ⁵
INFORM index	6 ⁶
Fragile State index	95.1 ⁷
GINI Index	41 ⁸
Net official development assistance received (in millions)	1,757 ⁹

b. Humanitarian law instruments ratified by the country

- | | |
|--|---------------------|
| → Mine Ban Treaty / Status: | Ratified 03/12/1997 |
| → Convention on Cluster Munitions / Status: | Ratified 30/05/2017 |
| → UN Convention on the Rights of Persons with Disabilities / Status: | Ratified 25/09/2008 |

c. Geopolitical analysis

Uganda currently faces one of the fastest-growing refugee crisis in the world. As of December 2017, there were a total of 1,395,146 refugees and asylum seekers in Uganda from 13 countries, hosted in nine districts located

¹ [WB \(2017\)](#)

² [UNDP \(2017\)](#)

³ [UNDP \(2017\)](#)

⁴ [UNDP \(2017\)](#)

⁵ [UNHCR \(2016\)](#)

⁶ [INFORM \(2018\)](#)

⁷ [FSI \(2017\)](#)

⁸ [WB \(2017\)](#)

⁹ [OECD \(2015\)](#)



mainly in the northern, southern, and southwestern regions of the country. Of those, 85% are women and 61% children. Some 934,170 new refugee arrivals entered Uganda between January 2016 and October 2017. The continuous fighting in South Sudan and the Democratic Republic of Congo, in parallel with deteriorating conditions caused by several seasons of drought in the region, has resulted in a massive increase in primarily South Sudanese and Congolese refugees arriving to Uganda since mid-2016. Uganda has become the largest refugee-hosting country in Africa, with refugees making up 3.5% of the country's total population of 39 million. UNHCR estimates that Uganda is likely to host 1.8 million refugees by the end of 2018.

Uganda has a good refugee protection environment, providing refugees with freedom of movement, the right to work and establish businesses, the right to documentation and access to national social services. The Government of Uganda formally launched the Comprehensive Refugee Response Framework (CRRF) in March 2017, expanding on existing initiatives, coordination mechanisms and policies. Still, people with disabilities within the population have specific needs and deserve particular attention.

Presence

After suspending its operations in 2013, HI relaunched a program in Uganda in the summer of 2017 to support the large numbers of refugees entering the country, most of whom had fled the conflict in South Sudan. The organisation is working to identify those with specific needs (people with disabilities, elderly people, single mothers with children, unaccompanied children, etc.) and facilitates their access to services in the refugee settlements.

HI offers vulnerable refugees psychosocial support and mental health services – many refugees have witnessed or experienced significant trauma. We also provide rehabilitation care and distributes mobility aids (crutches, wheelchairs, etc.) to help people with disabilities gain greater independence. HI coordinates with other humanitarian organisations in the settlements to make sure that the most vulnerable individuals are always taken into account.



Projects

Donor	Project Title	Sector	Duration	Start Date	End Date
Chaîne du Bonheur	Inclusive protection and life-saving integrated humanitarian assistance to the most vulnerable population (refugees and host population)	Protection, PSS	12 months	01 October 2017	30 September 2018
12-12 Consortia	Addressing the Humanitarian Crises and Famine in Yemen and East Africa	Protection	22 months	01 March 2017	31 December 2018
Aktion Deutschland Hilft	Providing inclusive protection and MHPSS assistance to vulnerable populations and those at risk of not accessing services	Protection, PSS	12 months	01 January 2018	31 December 2018

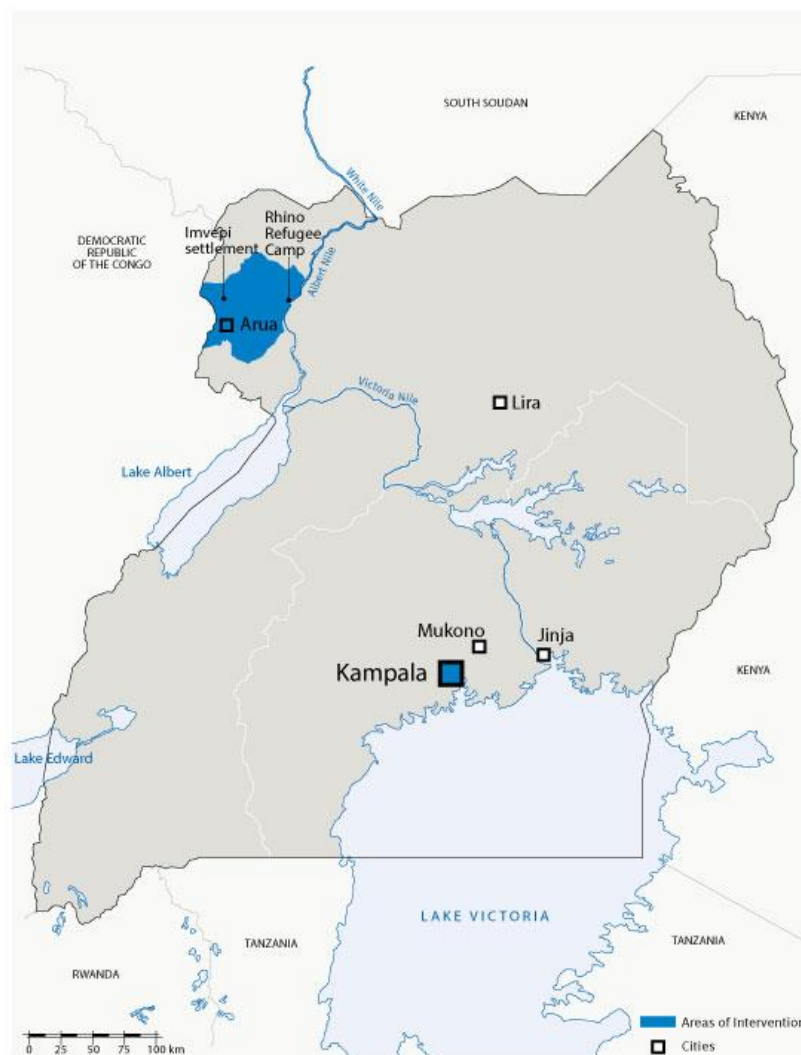


<p>Chaîne du Bonheur</p>	
<p>Centre De Crise</p>	
<p>12-12 Consortia</p>	
<p>Aktion Deutschland Hilft</p>	

HI team in Uganda



The country program currently has 70 staff in total. At the head office in Kampala, there are 7 staff, and in the Arua field office, there are 63.

Ouganda








Projects in detail

Sector of intervention/of services	Objectives of the projects in this sector	Types of intervention (main activities)	Beneficiaries (nature and numbers)	Operational partners	Location
 <p>Protection services</p>	<p>People with special needs are identified, have their needs assessed and improved access to services.</p>	<p><u>Case Management</u> including identification of people of concern, Through <u>needs assessment</u> of individual / household, internal or external referral for provision of needed services</p> <p><u>Psychological First Aid (PFA)</u> trainings for humanitarian frontline workers</p>	<p>2,000 beneficiaries targeted.</p> <p>300 humanitarian workers targeted.</p>	<p>-</p>	<p>Rhino (Omugo Extension) and Imvepi settlements</p>
 <p>Mental health and Psychosocial support</p>	<p>Psychosocial wellbeing, individual and collective resilience and social-cohesion are enhanced within the community</p>	<p><u>MHPSS awareness raising</u> sessions in the settlements and host communities</p> <p><u>Support groups</u> for people in need of Psychosocial support</p>	<p>10,000 beneficiaries targeted</p> <p>10 focus group sessions provided for around ten people separated between women,</p>		<p>Rhino (Omugo Extension) and Imvepi settlements</p>



HI – Federal Info – Uganda Country Card – 2018 09 – EN

services		<p><u>Individual PSS sessions</u> with a psychologist on an average of 10 sessions per beneficiary</p> <p><u>Specific PSS sessions for caregivers</u> of people with disabilities.</p>	<p>children and men.</p> <p>700 beneficiaries targeted.</p> <p>120 beneficiaries targeted.</p> <p>960 people targeted.</p>		
 <p>Rehabilitation services</p>	<p>Access to services and specialized supports existing in the intervention areas is improved for People living with disabilities and their caregivers</p>	<p>Rehabilitation sessions at fixed points by physiotherapists</p> <p>2nd phase:</p> <p>Additional <u>Rehabilitation services</u> fixed points</p> <p><u>Outreach rehabilitation</u> services by mobile teams.</p> <p>Development of <u>Comprehensive Rehabilitation</u> through the mobile</p>	<p>100 beneficiaries targeted.</p> <p>960 beneficiaries targeted.</p> <p>480 beneficiaries targeted.</p>		<p>Rhino (Omugo) and Imvepi settlements</p>

		teams, PSS team and community-based volunteers and caregivers	1440 beneficiaries targeted.		
  Disability Inclusion	Actors have improved capacities to ensure inclusion of all vulnerable populations in the delivery of humanitarian aid including to people with disabilities	<u>Inclusion assessment and technical support</u> : HI proposes to assess other organizations practices and strategies and to support them in developing specific actions to adapt their services to needs of PWD <u>Inclusion advocacy, awareness raising, trainings</u>	10 organizations (400 humanitarian workers)		In multiple West Nile settlements